

Welcome

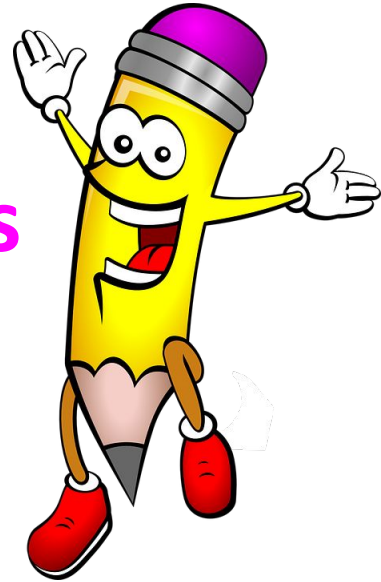
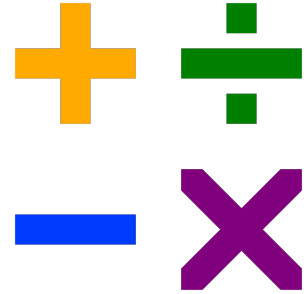
Instructional Review

Writing / LA and Mathematics

Mrs. Kim McLeod

Instructional Review Teacher

William Woodruff



Contact Information

Mrs. Kim McLeod

Instructional Review Teacher

Room 102

William Woodruff School

EMAIL: kmcleod@bhpsnj.org

Phone: 908-464-1723 Ext. 5323

Instructional Review - IR

Ensuring student success in
Mathematics and Writing



The Instructional Review Program in Berkeley Heights provides proactive academic support and intervention to meet the needs of all elementary learners, grades 2-5. Through the instructional support services, the students develop skills for better self-reliance and confidence to work independently in their classrooms.

IR Support Process

Students are eligible for support services for Mathematics and Language Arts/Writing through the district developed screening process.

This process includes review of:

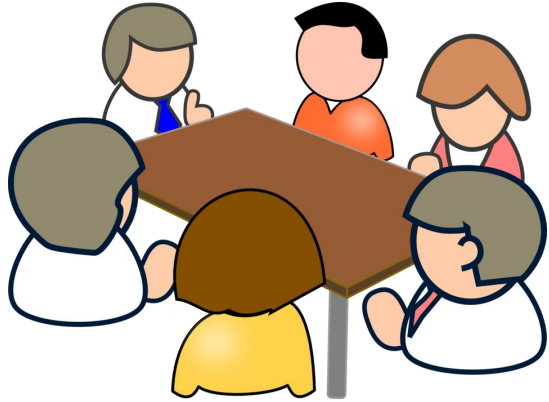
- Performance on district Mathematics and Writing benchmarks to determine level of proficiency.
- Classroom performance
- Teacher recommendation

Students needs are met through the provision of instructional support in order to improve functioning that is commensurate with grade-level expectations.

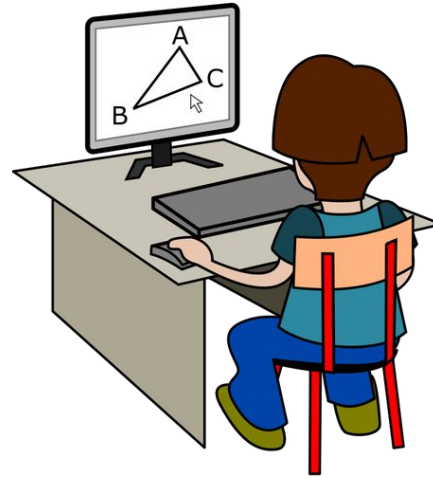
Students' progress will be continually monitored as we move through the school year.

IR Support

Students will be scheduled to receive small-group pull-out instruction and/or push-in support.



Support may also be remote depending on the week and time of day, (*Team A/B, all remote, and AM or PM sessions*)





**Wishing all students and
families a fulfilling
2020-2021 school year!**

Thank you for visiting